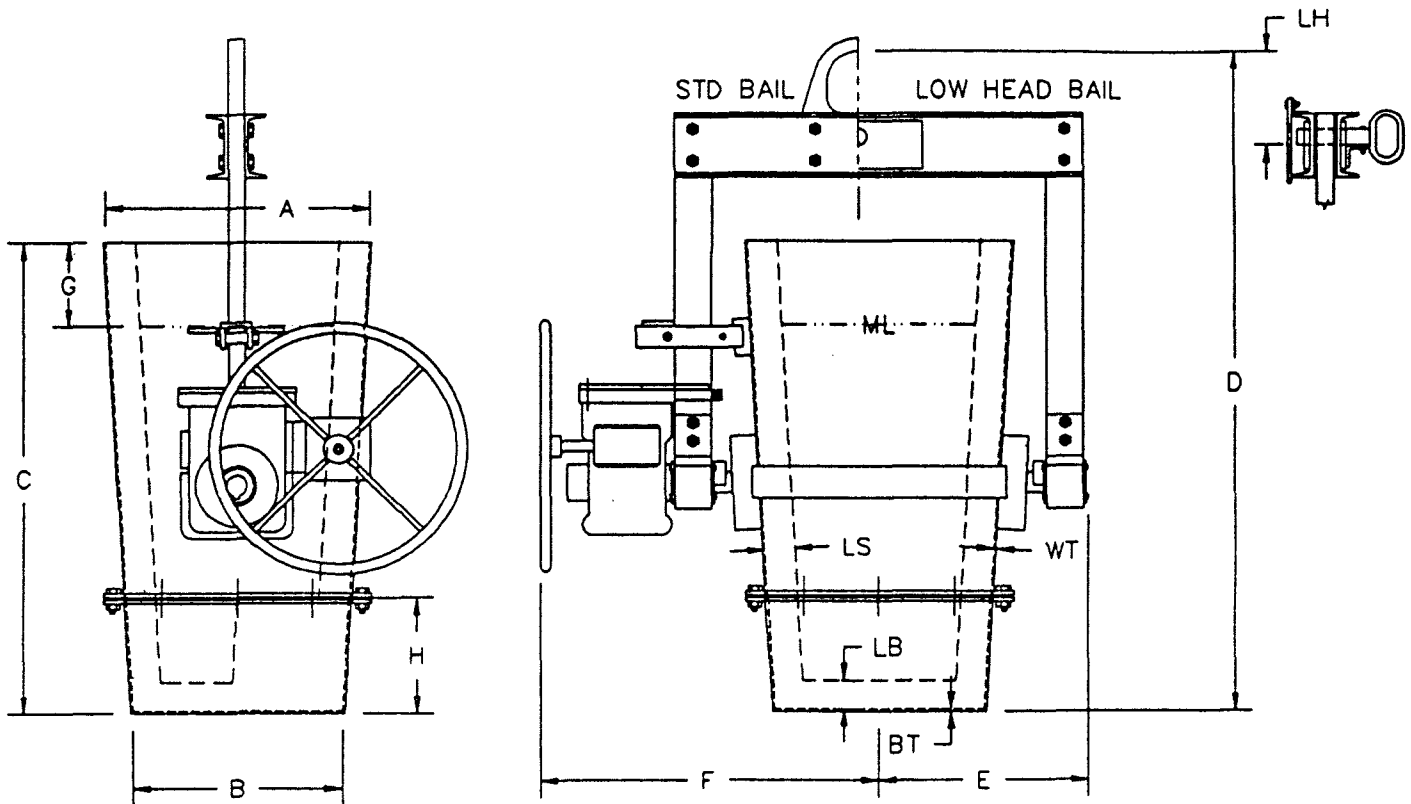


D&E SANDWICH PROCESS DUCTILE IRON TREATMENT LADLES



Ladle lining forms and spare ladle bottoms are some of the accessories that help control maintenance costs and down time for D&E process ladles. Other options include motorized gear tilt and cradles that hold ladles for pouring. See catalog page 10-12 for a complete description of D&E Ladle innovations and accessories.

Model No	Iron Capacity	A ID	B ID	C	D	LH*	E	F	G	H	LB	LS	B	WT
LO25-220-3050	1000	22.0	19.0	40.0	56.0	8.0	17.0	29.25	6.0	9.0	3.0	2.5	0.25	0.19
LO25-250-3550	1500	25.0	20.0	45.0	63.0	8.75	20.25	34.25	5.0	10.0	3.0	3.0	0.25	0.19
LO25-280-3550	2000	28.0	22.0	50.0	70.0	8.75	21.75	35.5	7.0	11.0	3.0	3.0	0.25	0.19
LO25-320-4060	3000	32.0	25.0	57.0	76.0	8.75	24.0	37.25	11.0	12.0	3.0	3.0	0.31	0.25
LO25-340-4060	4000	34.0	29.0	61.0	80.0	8.75	25.0	38.5	12.0	13.0	3.0	3.0	0.31	0.25
LO25-410-50D4	6000	41.0	33.0	73.0	92.0	15.75	30.0	47.0	14.0	14.0	4.5	4.5	0.31	0.25
LO25-440-50D4	8000	44.0	36.0	80.0	102.0	15.75	31.5	48.5	14.0	16.0	5.0	5.0	0.38	0.31
LO25-480-60D4	10000	48.0	39.0	88.0	120.0	15.75	34.0	52.25	18.0	18.0	5.0	5.0	0.38	0.31

*Height "D" is reduced by "LH" with Low Headroom Bail option.

NOTE: Capacities are in pounds. Dimensions are in inches and are subject to change.